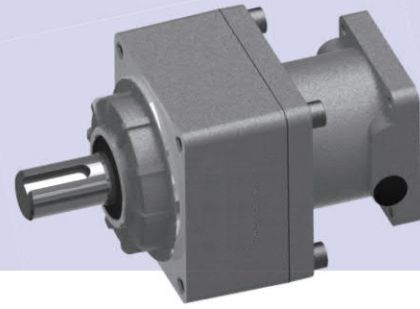


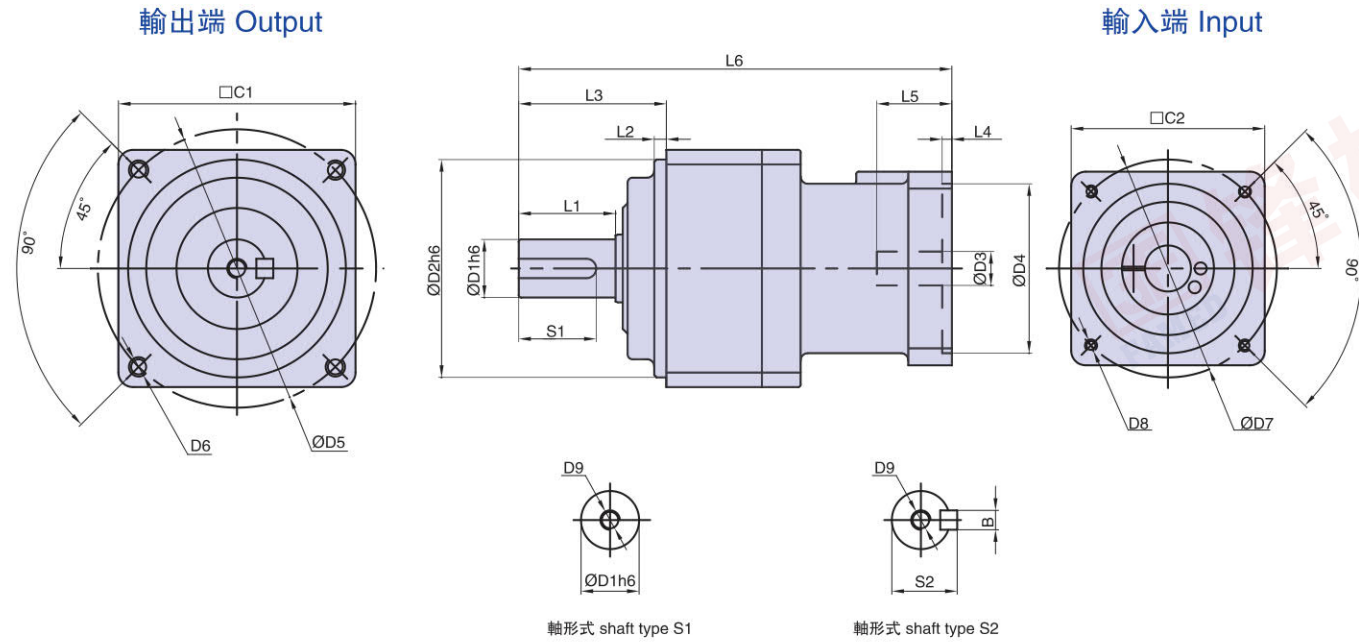
# MODEL: VRSF

雙段 2-Stage

速比 Ratio: 15, 20, 25, 30, 35, 40, 50, 70, 100



外形尺寸圖 Dimensions:



Unit:mm

尺寸 Size	VRSF060-L2	VRSF080-L2	VRSF100-L2	VRSF125-L2
D1	12	19	24	32
D2	50	70	90	110
D3	11(11 ~ 14)	14(14 ~ 19)	14 ~ 19	22(22 ~ 24)
D4	50	50(50 ~ 70)	50(50 ~ 70)	110
D5	60	90	115	135
D6	M5	M6	M8	M10
D7	45(45 ~ 70)	70(70 ~ 90)	70 ~ 90	145
D8	M4 ~ M5	M4 ~ M5	M4 ~ M5	M8
D9	M4	M6	M8	M12
L1	20	30	40	55
L2	3	3	5	5
L3	32	50	61	75
L4	4	4	4	8
L5	32	32	38	65.5
L6	109	150 ~ 155	165 ~ 179	250.5
C1	52	78	98	125
C2	52	60(60 ~ 80)	60(60 ~ 80)	125(125 ~ 130)
S1	18	22	32	52
S2	13.5	21.5	27	35
B	4	6	8	10

注1: ( ) 括號內為可選擇範圍尺寸, ( ) 括號外為標準尺寸。  
 注2: 減速機出力軸可以為客戶定制大小和長短。  
 注3: 輸入尺寸依據各品牌伺服馬達或步進馬達可以有變動。

Note 1: Inside of ( ) is the optional range of sizes, outside of ( ) is the standard sizes.  
 Note 2: The reducer output shaft size and length can be customized for customers.  
 Note 3: The input size can be changed according to the servomotor or stepper motor of each brand.

## RIGHT ANGLE REDUCER 直角減速器

ZR

### 角度旋轉低背隙小于10秒

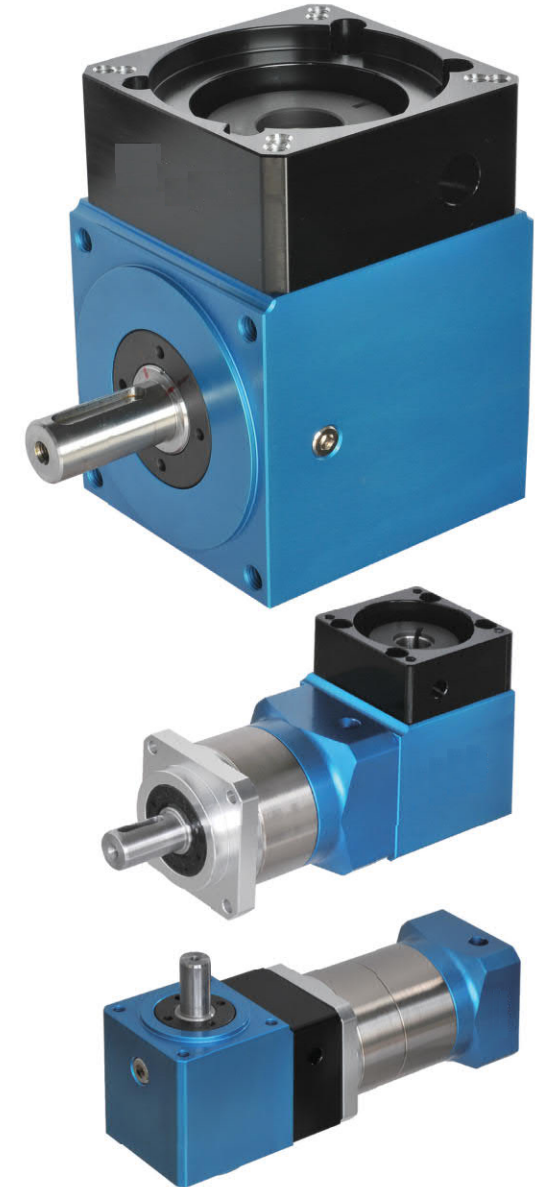
- 採用先進六軸精密機械加工，一次裝夾同時加工完成，確保最佳幾何精度。
- 傳動齒輪經精密研製，運轉低背隙、高精度。
- 精密傳動、寂靜、穩定、順暢、流程；達到精密傳動，低噪音、高剛性等高品質要求。

### Low rotating backlash less than 10 seconds

- The right angle reducer is processed using a high precision six axial machine. It is clamped and finished all in one process.
- Transmission gears can achieve low rotating backlash and high accuracy through precision grinding.
- Precision transmission and quiet, stable operation can realize low noise, high rigidity and other requirements.

### 特性: Features

- 本體結構紮實、體積小，有效節省安裝空間。
- 雖然體積小、重量輕。但具有高扭矩輸出及低背隙的優異特性。
- 訂購時請告知馬達法蘭及心軸尺寸。
- The reducer body with a compact structure and small volume to save the mounting space.
- Although the reducer is small in volume and light in weight, and it features of high torque output and low backlash.
- When ordering, please inform the sizes of motor flange and shaft.







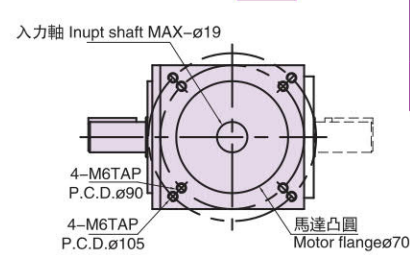


# 型號識別:Model Identification



**ZR** — **90** — **2** — **V2**

直角減速機系列 Right Angle Reducer      規格 Specifications      減速比 Ratio      馬達類型 Motor

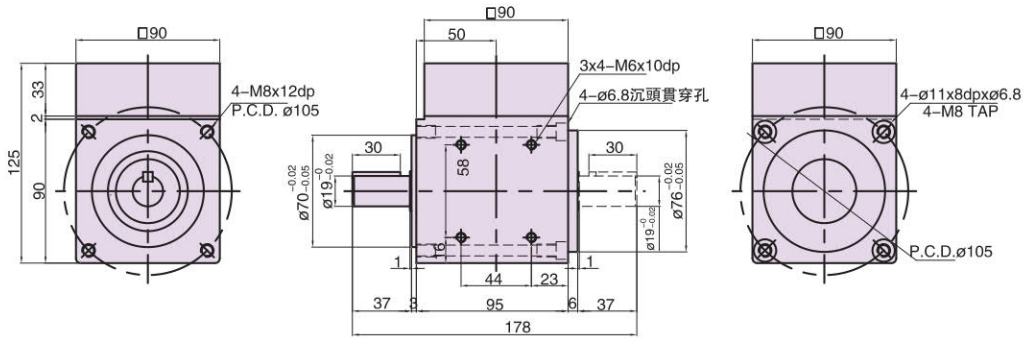


V1:伺服 Servo Ø19 PCD90,M5  
V2:伺服 Servo Ø19 PCD90,M6

T1:步進 Stepper Ø14 PCD98.4,M5  
T2:步進 Stepper Ø6 PCD43.8,M3

各廠牌75W AC 伺服馬達  
75W AC servo motor for each brand

各廠牌86型步進馬達  
86 stepper motor for each brand



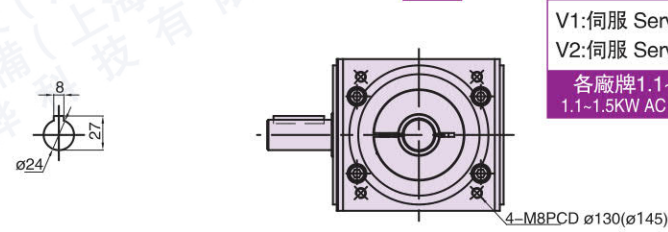
型號 Model No.	ZR90
容許最大轉矩(kgf.m/N.m)	12/120
破壞力矩值(kgf.m/N.m)	32/320
容許馬達轉速(rpm/min)	2500
背隙(min-arc)	0.5
重量(kg)	3.6

# 型號識別:Model Identification



**ZR** — **120** — **2** — **V2**

直角減速機系列 Right Angle Reducer      規格 Specifications      減速比 Ratio      馬達類型 Motor



V1:伺服 Servo Ø24 PCD145,M10  
V2:伺服 Servo Ø24 PCD145,M10

T1:步進 Stepper 19 PCD98.4,M5

各廠牌1.1~1.5KW AC 伺服馬達  
1.1~1.5KW AC servo motor for each brand

各廠牌86型步進馬達  
86 stepper motor for each brand

型號 Model No.	ZR120
容許最大轉矩(kgf.m/N.m)	16/160
破壞力矩值(kgf.m/N.m)	45/450
容許馬達轉速(rpm/min)	2500
背隙(min-arc)	0.5
重量(kg)	8

**ZR** — **90S** — **6** — **V2**

直角減速機系列 Right Angle Reducer      規格 Specifications      減速比 Ratio      馬達類型 Motor

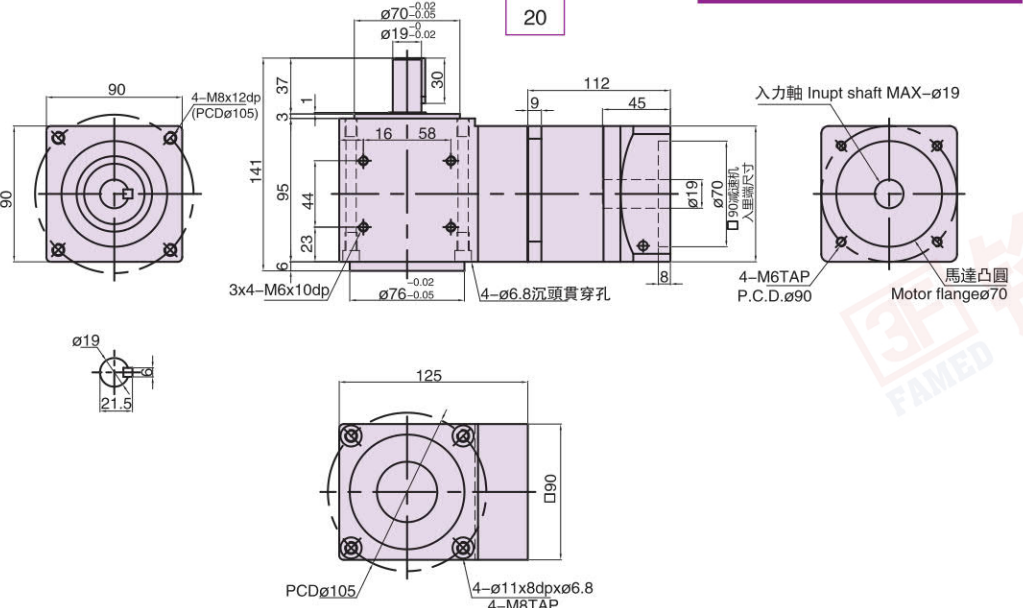
- 6
- 8
- 10
- 14
- 20

V1:伺服 Servo Ø19 PCD90,M5  
V2:伺服 Servo Ø19 PCD90,M6

T1:步進 Stepper Ø14 PCD98.4,M5

各廠牌75W AC 伺服馬達  
75W AC servo motor for each brand

各廠牌86型步進馬達  
86 stepper motor for each brand



型號 Model No.	ZR90S
容許最大轉矩(kgf.m/N.m)	12/120
破壞力矩值(kgf.m/N.m)	32/320
容許馬達轉速(rpm/min)	2500
背隙(min-arc)	2
重量(kg)	6.5

**ZR** — **120S** — **6** — **V2**

直角減速機系列 Right Angle Reducer      規格 Specifications      減速比 Ratio      馬達類型 Motor

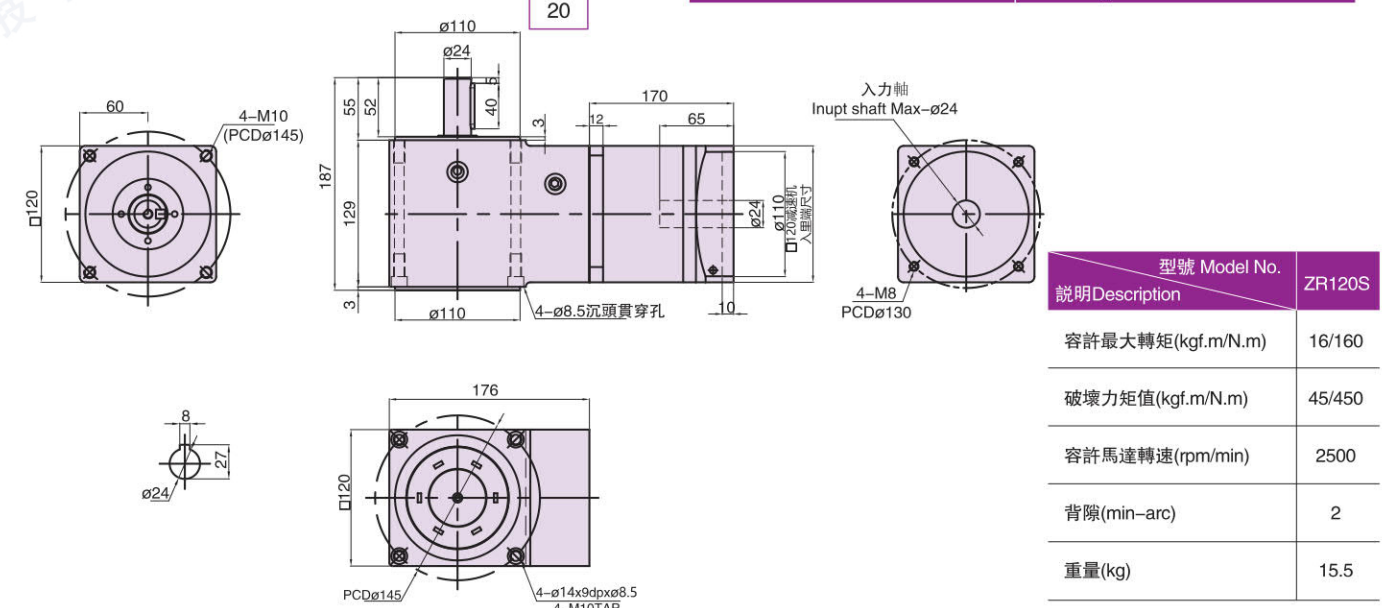
- 6
- 8
- 10
- 14
- 20

V1:伺服 Servo Ø24 PCD145,M10  
V2:伺服 Servo Ø24 PCD145,M10

T1:步進 Stepper 19 PCD98.4,M5

各廠牌1.1~1.5KW AC 伺服馬達  
1.1~1.5KW AC servo motor for each brand

各廠牌86型步進馬達  
86 stepper motor for each brand



型號 Model No.	ZR120S
容許最大轉矩(kgf.m/N.m)	16/160
破壞力矩值(kgf.m/N.m)	45/450
容許馬達轉速(rpm/min)	2500
背隙(min-arc)	2
重量(kg)	15.5